



Palmers Road, Bethnal Green, E2

BUTLER  STAG



Price Guide £825,000 - £900,000
Set within this secure gated development is this striking, modern four bedroom townhouse. Spanning over 1500 Sq/ft. and arranged over three floors, this property provides versatile living accommodation for the new discerning owner.



Freehold

- Secure Gated Mews Development
- Victoria Park Close By
- Versatile Living Accommodation
- Secure Off Street Parking
- 1500 Sq/ft of Internal Living Space
- Freehold Townhouse
- Two Bathrooms
- Private Terrace
- Four Double Bedrooms
- Chain Free

Spaciously arranged over three floors the property boasts four exceptionally large double bedrooms, ground floor shower room and top floor family sized bathroom, private terrace that enjoys afternoon sun and a dual aspect kitchen/reception room and conservatory.

Justine's Place is set off a no-through turning just moments from the green open spaces of Victoria Park, Regents Canal, Mile End Ecology Park, Soho Gym and Mile End tube station all close by.





**Justines Place,
Palmers Road, E2**

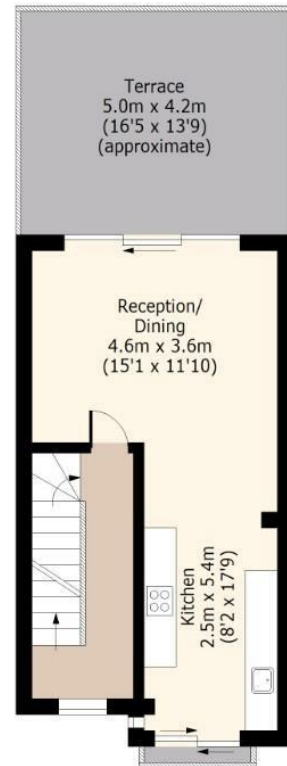
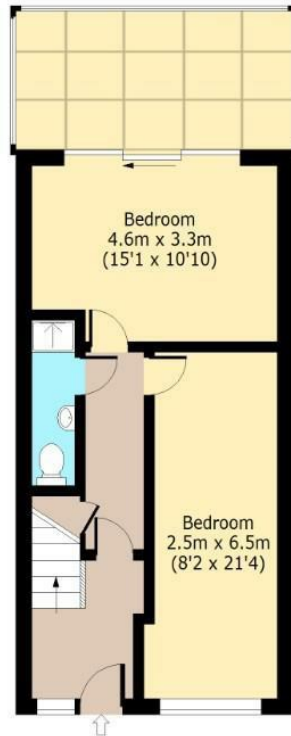
First Floor

Approx. 40.1 Sq. meters (432 Sq. feet)



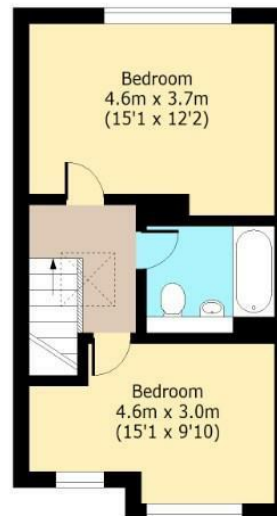
Ground Floor

Approx. 60.9 Sq. meters (656 Sq. feet)



Second Floor

Approx. 40.1 Sq. meters (432 Sq. feet)



Total area: approx. (Including Terrace) 161.8 Sq. meters (1742 Sq. feet)
Total area: approx. (Excluding Terrace) 141.2 Sq. meters (1520 Sq. feet)

For illustration purposes only - not to scale
www.lapplus.com

BUTLER & STAG

☎ 020 8102 1236

🏠 508 Roman Road, Bow, London, E3 5LU

✉ bow@butlerandstag.com

www.butlerandstag.uk

IMPORTANT NOTICE - These particulars have been prepared in good faith and they are not intended to constitute part of an offer or contract. We have not performed a structural survey on this property and the services, appliances and specific fittings have not been tested. All photographs, measurements, floor plans and distances referred to are given as a guide and should not be relied upon.